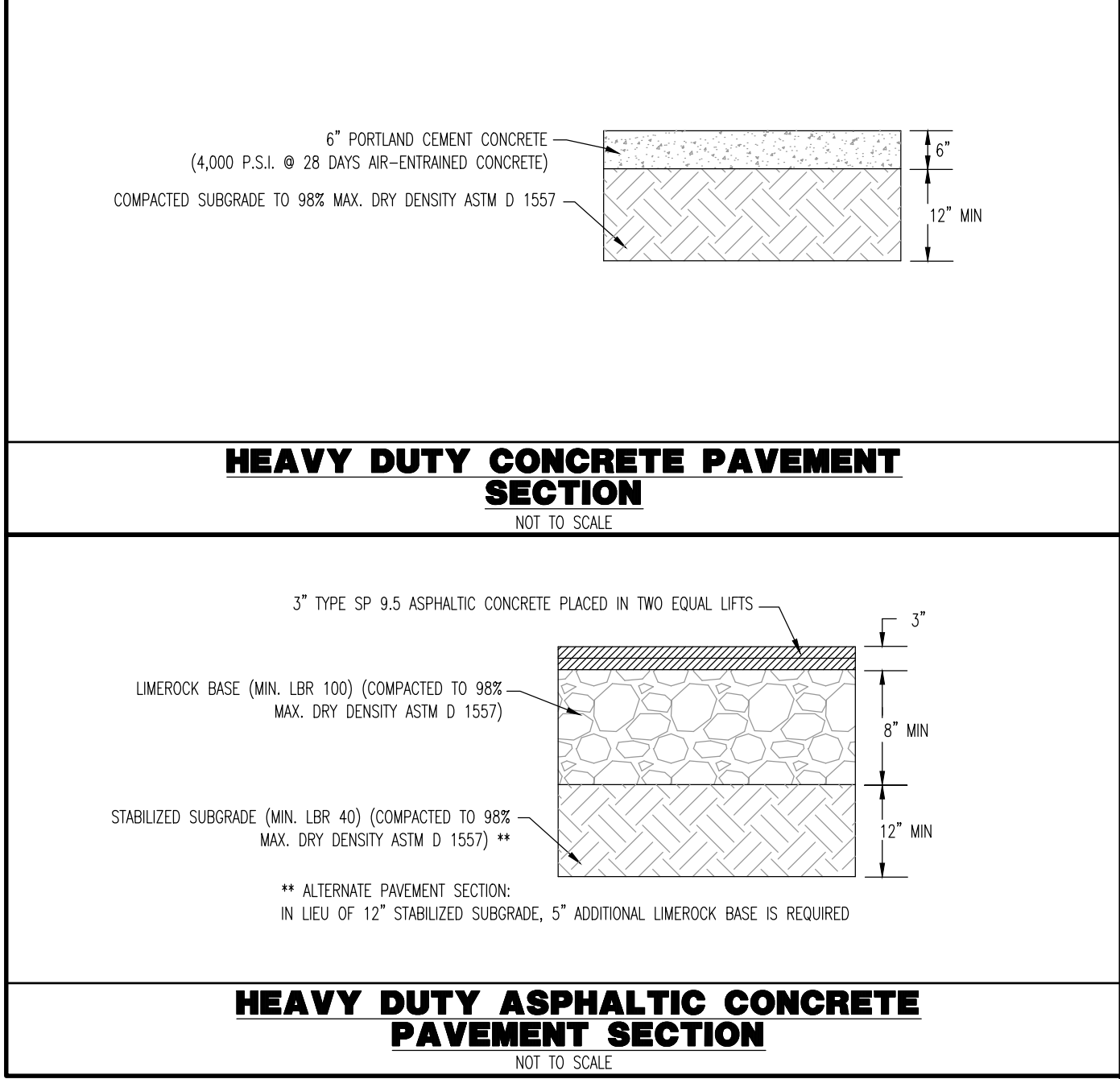
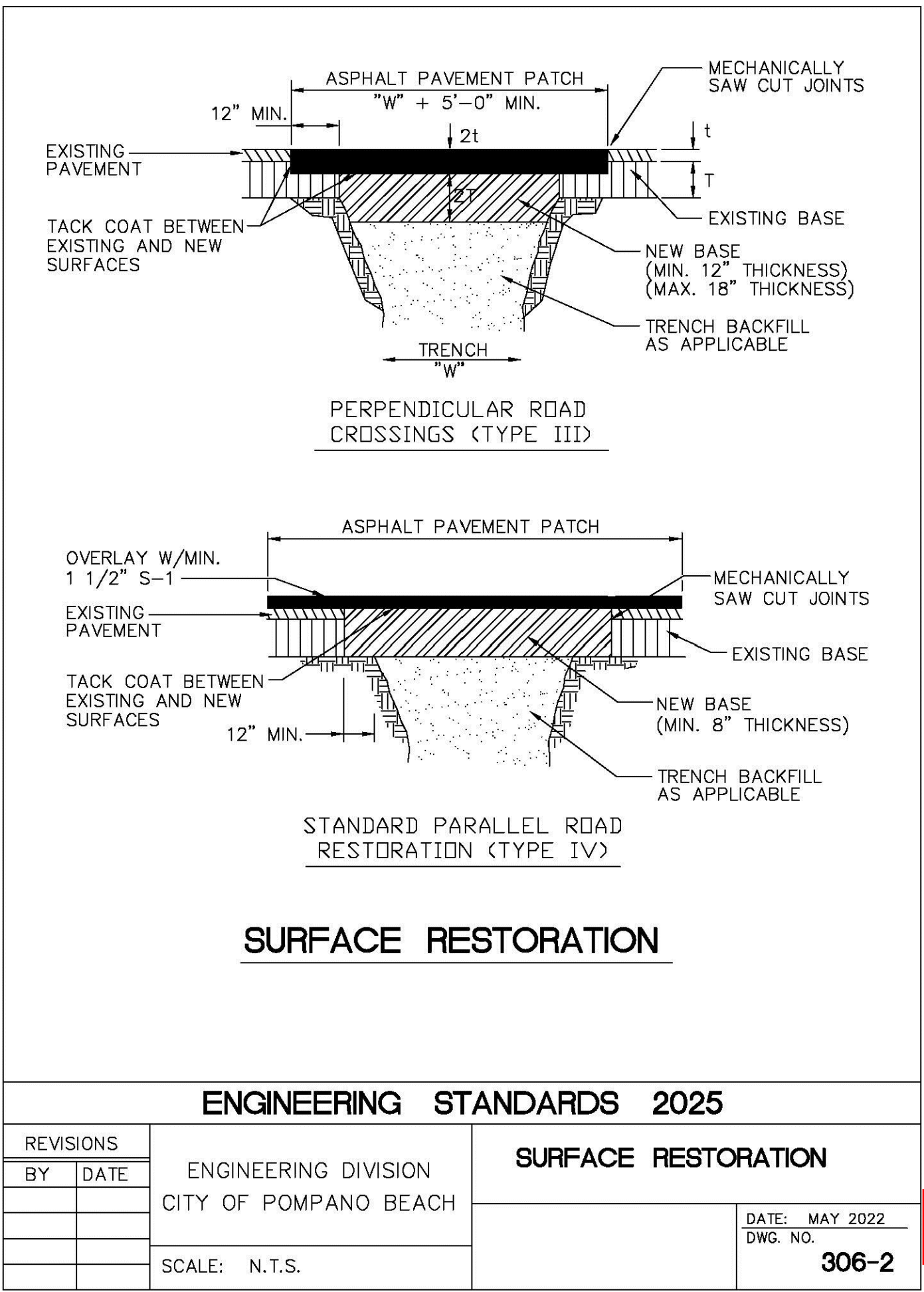
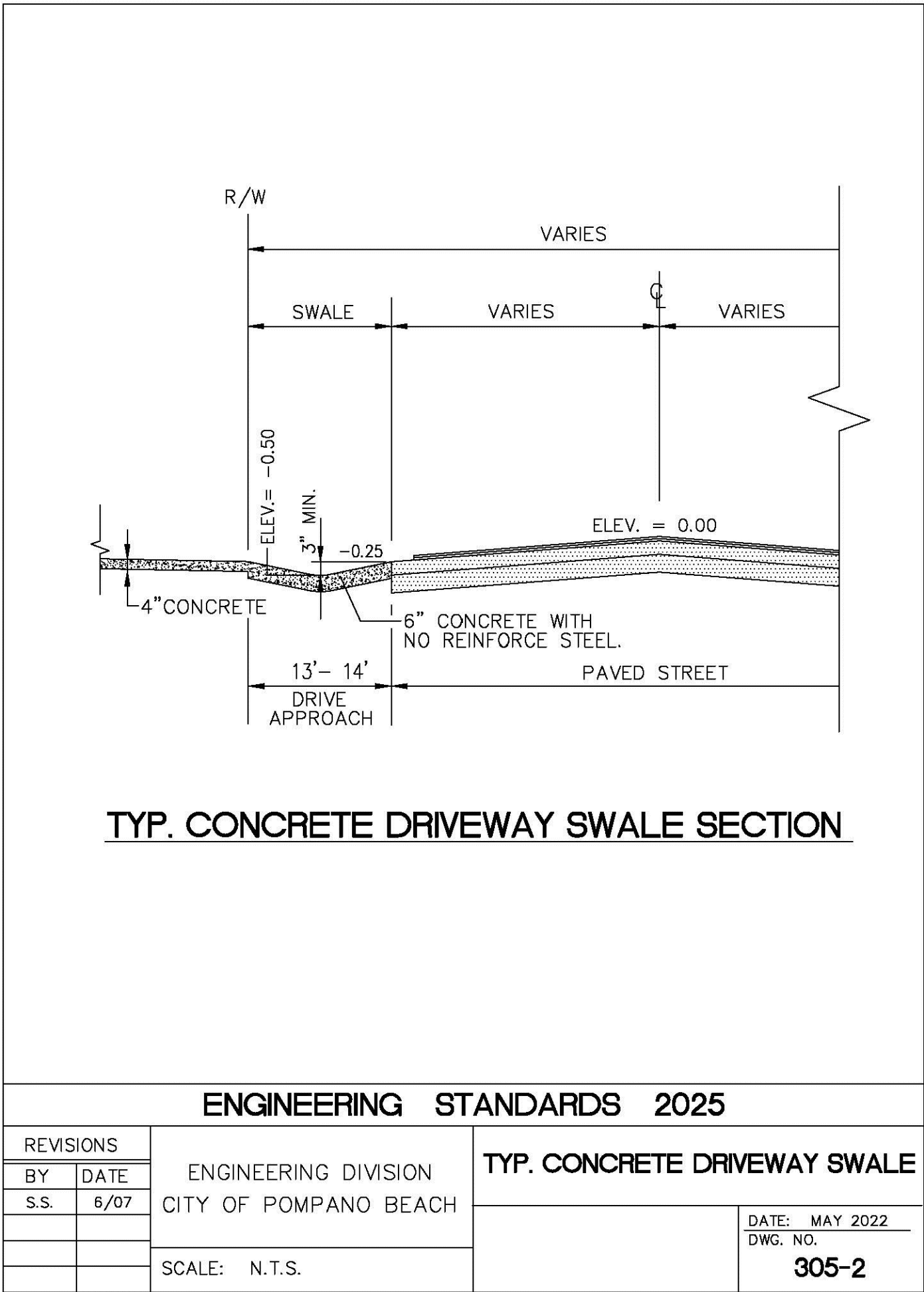
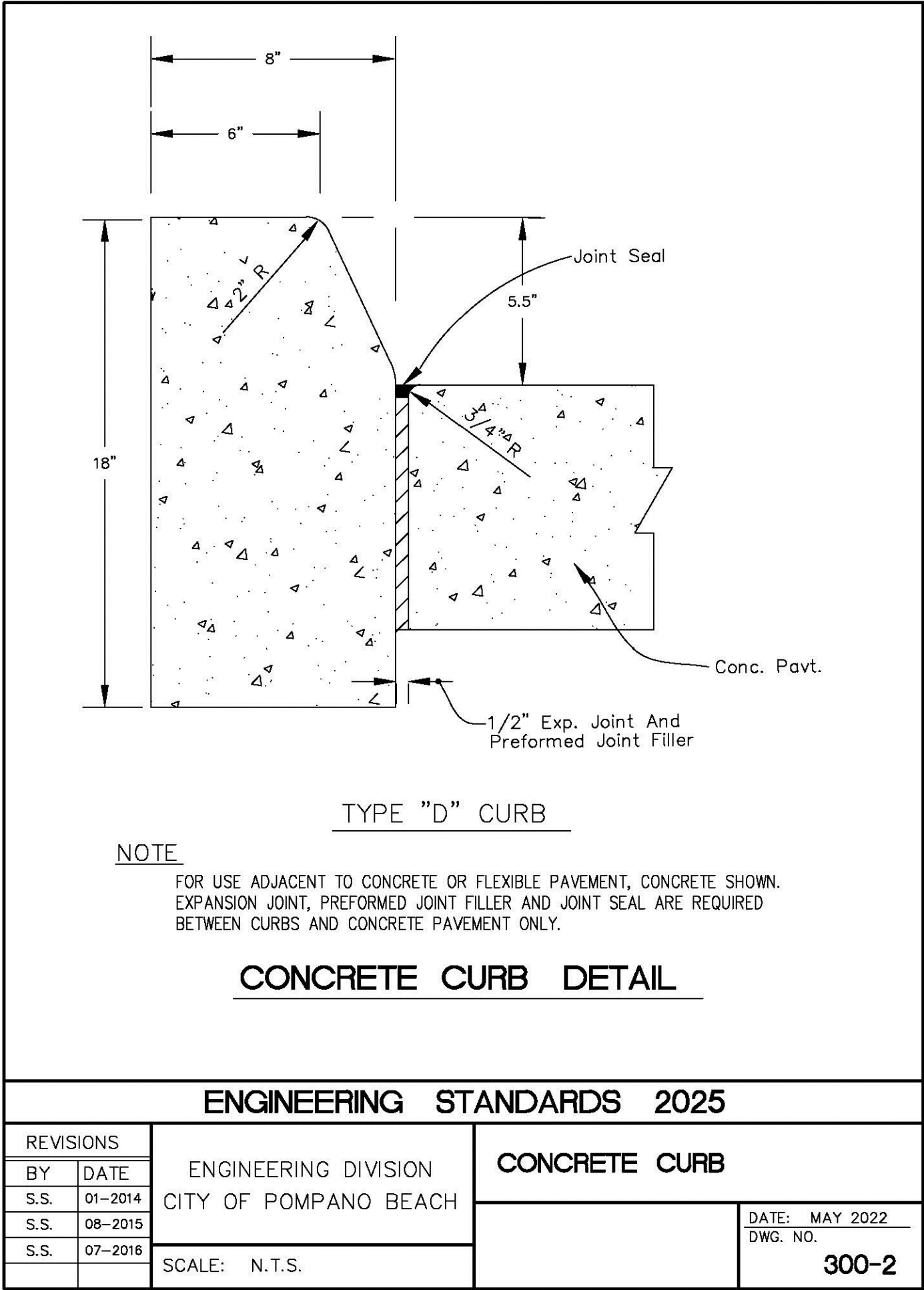


Plotted: 05/27/25 - 4:09 PM. By: kkonius. Product Ver: 25.0  
File: F:\DESPC PROJECTS\5758 LT 20 LLC\25-01613 Pompano Beach FL\Dwg\Entitlements\057582501613SPD.dwg, ----> C3.01 PAVING GRADING & DRAINAGE DETAILS



**DYNAMIC ENGINEERING**  
LAND DEVELOPMENT CONSULTING • PERMITTING  
GEOTECHNICAL • ENVIRONMENTAL  
TRAFFIC • SURVEY • PLANNING & ZONING  
100 NE 5th Avenue  
Suite 82  
Delray Beach, FL 33483  
T: 561.921.8570  
Offices conveniently located throughout the United States:  
New Jersey | Delaware | Florida | Maryland | Pennsylvania | Texas  
Florida Certificate of Authorization No. 32333  
www.dynamiccc.com

**ÁNGEL PIÑERO**  
PROFESSIONAL ENGINEER  
FLORIDA LICENSE No. 88047  
DATE:

**811**  
PROTECT YOURSELF  
ALL STATES REQUIRE NOTIFICATION OF  
EXCAVATORS, DESIGNERS, OR ANY PERSON  
PREPARING TO DISTURB THE EARTH'S  
SURFACE. ADVISE IN ANY STATE.  
FOR STATE SPECIFIC DIRECT PHONE NUMBERS VISIT:  
WWW.CALL811.COM

TITLE:  
**PAVING, GRADING &  
DRAINAGE DETAILS**

SCALE: (H) NOT TO  
(V) SCALE DATE: 04/15/2025  
PROJECT No: 5758-25-01613  
DATE: MAY 2022  
DWG. NO. 306-2  
Rev. #:

**DRG**  
**C3.01**  
P225-12000014  
07/02/2025